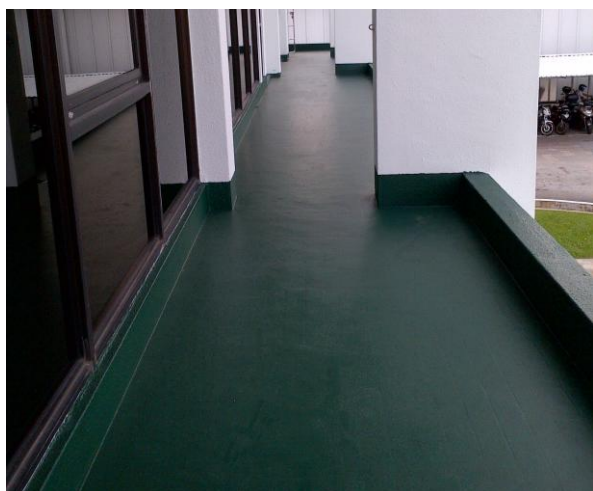




# DELTA STARLITE 500 (FLOOR)

Polyester Urethane Coating for Concrete Substrates



## DESCRIPTION

A two component, high performance, pigmented or clear polyester urethane coating.

## USES

- ❖ Use in areas where an extremely durable interior/exterior finish is required.
- ❖ For protection of surfaces against dusting, solvent, UV exposure and chemical attack.
- ❖ Typical applications include interior floors, exterior parking deck, passageway, apron, and as a top coat for other Delta products.

## COLOR

Available in clear and range of standard colours

## FINISH

High gloss, satin and matt.

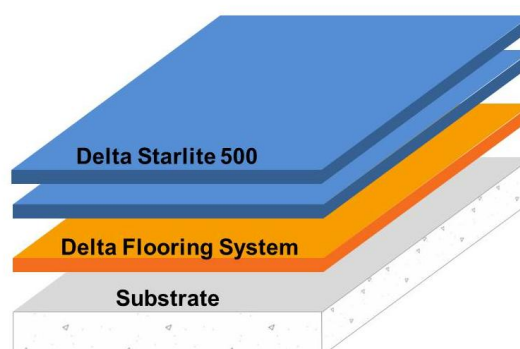
## BENEFITS

- ❖ Good bond adhesion to non-porous substrates.
- ❖ Excellent UV and weathering resistance.
- ❖ Resistance to a wide range of chemicals.
- ❖ Easy to apply and clean.
- ❖ Extremely durable.
- ❖ Versatile – can be used as a decorative coating for vertical and horizontal substrates.
- ❖ Can be applied over most Delta Flooring Systems.

## SURFACE PREPARATION

Substrates to be coated must be structurally sound, clean and free from any contamination. Surface preparation by light sanding. For oil/grease contaminated areas, use degreaser followed by thorough water washing and drying. For other specific application, consult DELTA INTERCONTINENTAL P/L.

## APPLICATION



- ❖ First coat of Delta Starlite 500 @ 0.10lit/m<sup>2</sup>.
- ❖ Second coat of Delta Starlite 500 @ 0.10lit/m<sup>2</sup>.

**Delta Intercontinental Pte Ltd**  
38 Woodlands Industrial Park E1, #06-04  
Singapore 757700

Tel : +65 6219 0700 Fax: +65 6219 2822  
Email : [deltaintercon@singnet.com.sg](mailto:deltaintercon@singnet.com.sg)  
Website : [www.deltaintercon.com.sg](http://www.deltaintercon.com.sg)



# DELTA STARLITE 500 (FLOOR)

Polyester Urethane Coating for Concrete Substrates

Mixing – Before mixing, stir Part A, then mix Part A and Part B thoroughly for 2 minutes using a slow speed power mixer (300-500rpm).

Tools – Applied by brush, short nap epoxy roller or airless sprayer.

Recoating time – Interval between coats: 8 hours.  
Maximum recoating time: 24 hours.

## TECHNICAL AND APPLICATION DATA

Recommended dry film thickness	100 $\mu$ (2 coats)
No. of coats	2
No. of components	2
Mixing Ratio A:B (by volume)	4:1
Pot Life	60 minutes @ 30°C
Touch Dry	6 hours @ 25°C
Full Cure	7 days
Temperature Resistance	80°C

## PACKAGING

- ❖ 5 lit set comprises of: Part A – 4 lit  
Part B – 1 lit

## MAINTENANCE

To maintain the appearance of the floor, all spillage must be removed immediately and clean regularly using rotary scrubber, wash and vacuum in conjunction with suitable detergents and waxes.

## STORAGE CONDITIONS AND SHELF LIFE

All components of Delta Starlite 500 have a shelf life of 12 months in original unopened packing, stored in dry enclosed place without exposing to direct sunlight and at temperature between 15°C to 35°C, protected from frost.

## SAFETY

Product is highly flammable and contains free isocyanates. Do not smoke when working. Ensure adequate ventilation and avoid inhaling vapours when working. Always use with suitable personal protective equipment.



# DELTA STARLITE 500 (FLOOR)

Polyester Urethane Coating for Concrete Substrates

## Chemical Resistance List (6-hour Open Spot Test)

Chemical	Result
Acetic Acid (10%)	No effect
Acetic Acid (25%)	No effect
Acetic Acid (40%)	No effect
Acetic Acid (99%)	No effect
Brine (Saturated sodium chloride)	No effect
Calcium Chloride (50%)	No effect
Calcium Hydroxide (Saturated)	No effect
Citric Acid (20%)	No effect
Citric Acid (60%)	No effect
Detergent (Alkaline)	No effect
DMF (>99.3%)	No effect
Formic Acid (40%)	No effect
Formic Acid (70%)	No effect
Formic Acid (90%)	Very faint mark
Formic Acid (99%)	Very faint mark
Gasoline	No effect
Hydrochloric Acid (10%)	No effect
Hydrochloric Acid (37%)	No effect
2-propanol (99%)	No effect
Jet Fuel	No effect
Kerosene	No effect
Methanol (99%)	No effect
Methylene Chloride (99%)	No effect
Methyl Ethyl Ketone (99%)	No effect

Chemical	Result
Motor Oil	No effect
Nitric Acid (5%)	No effect
Nitric Acid (30%)	No effect
Nitric Acid (65%)	Severe mark (Blistering)
Phosphoric Acid (5%)	No effect
Phosphoric Acid (40%)	No effect
Phosphoric Acid (50%)	No effect
Phosphoric Acid (85%)	Faint mark
Potassium Hydroxide (50%)	No effect
Sodium Chloride (Saturated)	No effect
Sodium Hydroxide (20%)	No effect
Sodium Hydroxide (32%)	No effect
Sodium Hydroxide (50%)	No effect
Sodium Hypochlorite (15%)	No effect
Sulfuric Acid (5%)	No effect
Sulfuric Acid (30%)	No effect
Sulfuric Acid (50%)	Faint mark
Sulfuric Acid (98%)	Severe mark (Peel off)
THF (99%)	No effect
Toluene (99%)	No effect
Distilled Water	No effect
White Spirit	No effect
Xylene (99%)	No effect

Note: All spillage must be removed immediately.