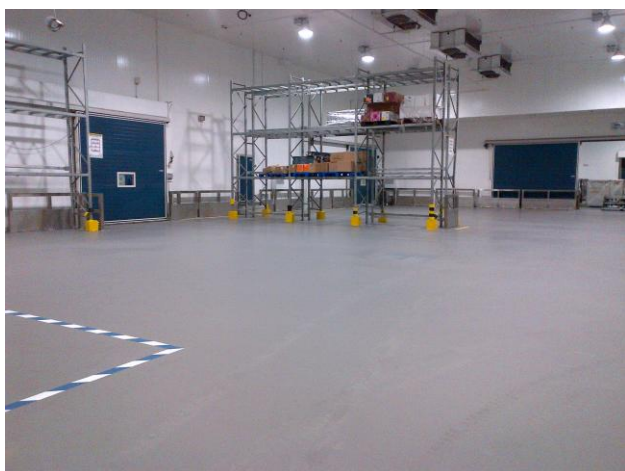




DELTA CHEMTOP MF TS

Heavy Duty Self-Smoothing Polyurethane Floor



DESCRIPTION

A flow applied, solvent free 3 component self-smoothing polyurethane flooring system for thin layer application and repairs in matt finish.

BENEFITS

- ❖ High impact and abrasion resistance.
- ❖ Excellent chemical resistance.
- ❖ Easy to clean and sterilize.
- ❖ Resist growth of bacteria, fungi, mold and mildew
- ❖ Solvent free.
- ❖ **HACCP certified to Singapore Standard** for use in facilities covered by HACCP accreditation

USES

- ❖ Chemical resistance floor for chemical process, containment area and wash down rooms.
- ❖ Hygienic floor for kitchen, wet food, beverage processing and packaging plants, pharmaceutical, electronic and chemical plants.

- ❖ Thermal shock resistance floor for freezers, refrigerators, and oven installed spaces.
- ❖ Mechanically durable floor for loading docks and warehouses.

COLOR

Available in a range of standard colours.

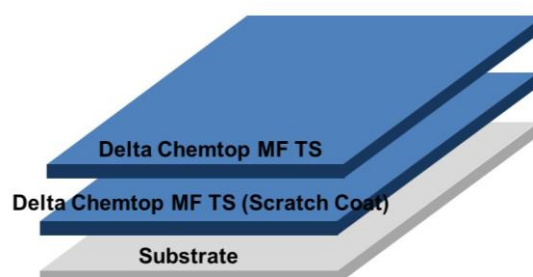
FINISH

Matt

SURFACE PREPARATION

Substrates will normally be concrete or polymer modified screeds with minimum compressive strength 25N/mm² and pull-off strength 1.5N/mm². Preferably vacuum shot blast the surface with non-impact method. Use concrete surface planer, grit blasting, surface grinding or other mechanical means until a profile is evident and satisfactory. Substrate must be clean and free from any contamination. For other specific application, consult DELTA INTERCONTINENTAL P/L.

APPLICATION



- Apply scratch coat of Delta Chemtop MF TS @ 2.0kg/m² (average 1mm thick).
- Finishing coat of Delta Chemtop MF TS @ 2.0kg/m² (average 1mm thick).

Delta Intercontinental Pte Ltd
38 Woodlands Industrial Park E1, #06-04
Singapore 757700

Tel : +65 6219 0700 Fax: +65 6219 2822
Email : deltaintercon@singnet.com.sg
Website : www.deltaintercon.com.sg



DELTA CHEMTOP MF TS

Heavy Duty Self-Smoothing Polyurethane Floor

Mixing – before mixing, stir Part A, then mix Part A and Part B thoroughly for 10 seconds. Add Part C and mix content thoroughly for 1 minute. Mixing is done by using high speed power mixer (750 rpm).

Tools – Applied using notched rake, notched trowel, spike roller.

Recoating time – Interval between coats: 18 hours.

Maximum recoating time: 24 hours.

TECHNICAL AND APPLICATION DATA

Compressive Strength	45N/mm ²
Tensile Strength	10N/mm ²
Flexural Strength	18N/mm ²
Dynamic E-Modulus	14,500N/mm ²
Concrete Adhesion	Concrete fails
Thermal Conductivity	0.9 W/m°C
Taber Abrasive Resistance (1000g loading, 1000rpm)	0.1 g
Coeff. Thermal Expansion	3.5 x 10 ⁻⁵ °C
Density	1.9 kg/mm/m2
Impact Resistance (BRE Screed Tester)	<0.5mm
Temperature resistance	60°C
Chemical Resistance	See list attached

Recommended dry film thickness	2mm
No. of components	3
Mixing ratio (by weight)	3 : 3 : 10 Part A : B : C
Pot Life	20 mins @ 30°C 25mins @ 15°C 35mins @ 8°C
Full Cure	5 days @ 35°C 7 days @ 25°C

MAINTENANCE

To maintain the appearance of the floor, all spillage must be removed immediately and clean regularly using rotary scrubber, wash and vacuum in conjunction with suitable detergents and waxes.

STORAGE CONDITIONS AND SHELF LIFE

The shelf life of Part A and Part B is 12 months; Part C is 6 months in original unopened packing, stored in dry enclosed place without exposing to direct sunlight and at temperature between 10°C to 32°C. Protect from frost.

PACKAGING

16 kg set.

Comprises of: Part A - 3kg

Part B - 3kg

Part C – 10kg

SAFETY

Product contains polyurethane resin and diisocyanate. Do not take internally. May irritate eyes and skin. Ensure adequate ventilation and avoid inhaling vapours. Always use with suitable personal protective equipment. For more information on safety, refer to the product safety data sheet.



DELTA CHEMTOP MF TS

Heavy Duty Self-Smoothing Polyurethane Floor

Chemical Resistance List (6-hour Open Spot Test)

Chemical	Result
Acetic Acid (10%)	No effect
Acetic Acid (25%)	No effect
Acetic Acid (40%)	No effect
Acetic Acid (99%)	Faint mark (discoloration)
Ammonium Hydroxide (25%)	No effect
Brine (Saturated sodium chloride)	No effect
Calcium Chloride (50%)	No effect
Calcium Hydroxide (Saturated)	No effect
Citric Acid (20%)	No effect
Citric Acid (60%)	No effect
Detergent (Alkaline)	No effect
Formic Acid (40%)	Faint mark (discoloration)
Formic Acid (70%)	Faint mark (discoloration)
Formic Acid (90%)	Severe mark (discoloration)
Formic Acid (99%)	Severe mark (discoloration)
Gasoline	No effect
Hydrochloric Acid (10%)	No effect
Hydrochloric Acid (37%)	Faint mark (stain)
2-propanol (99%)	No effect
Jet Fuel	No effect
Kerosene	No effect
Methanol (99%)	No effect
Methylene Chloride (99%)	No effect
Methyl Ethyl Ketone (99%)	No effect
Methyl Tert-Butyl Ether	No effect
Motor Oil	No effect
Nitric Acid (5%)	Faint mark (stain)
Nitric Acid (30%)	Severe mark (stain)
Nitric Acid (65%)	Severe mark (stain)
Phosphoric Acid (5%)	No effect
Phosphoric Acid (40%)	No effect
Phosphoric Acid (50%)	No effect
Phosphoric Acid (85%)	No effect

Chemical	Result
Potassium Hydroxide (50%)	No effect
Sodium Chloride (Saturated)	No effect
Sodium Hydroxide (20%)	No effect
Sodium Hydroxide (32%)	No effect
Sodium Hydroxide (50%)	No effect
Sodium Hypochlorite (15%)	Faint mark (stain)
Sulfuric Acid (5%)	No effect
Sulfuric Acid (30%)	No effect
Sulfuric Acid (50%)	No effect
Sulfuric Acid (98%)	Severe mark (stain)
THF (99%)	No effect
Toluene (99%)	No effect
Distilled Water	No effect
White Spirit	No effect
Xylene (99%)	No effect

Note: All spillage must be removed immediately.