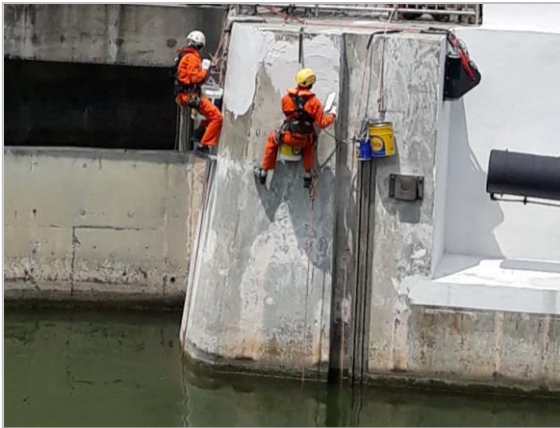




DELTA STARLITE 110

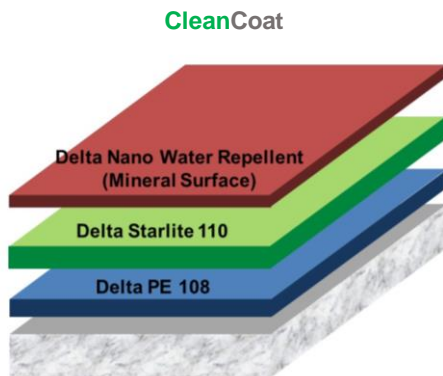
Resurfacing Finish for Concrete



DESCRIPTION

Delta Starlite 110 is a powder with special hydraulic binders and reinforcement fibers. It is used as a resurfacing finish for **CleanCoat** (Delta Water Repellent Coating System).

SYSTEM DESIGN



BENEFITS

- ❖ Renders concrete structures an aesthetically pleasing finish
- ❖ Build-in strength due to fiber reinforcement
- ❖ Fast and crack free hardening
- ❖ Does not collapse and is easy to apply

USES

- ❖ As a resurfacing finish for **CleanCoat** (Delta Water Repellent Coating System).

COLOR

White

SURFACE PREPARATION

Substrates to be coated must be structurally sound, clean and free from any contamination. Surface preparation by scarifying, diamond disc grinding and high pressure water jetting. For oil/grease contaminated areas, use chemical degreaser followed by thorough water washing and drying. For other specific application, consult DELTA INTERCONTINENTAL PTE LTD.

APPLICATION

- ❖ 1 coat of Delta PE 108 @ 0.125lit/m²
- ❖ 1 coat of Delta Starlite 110 @ 3.33kg powder/m² (average 3mm thick)

Mixing – Clear water is put into a clean mixing container and whilst stirring vigorously as much powder is mixed in, to give a lump free compound.

Tools – Applied using steel trowel.

Recoating Time – after 24 hours.

Delta Intercontinental Pte Ltd
38 Woodlands Industrial Park E1, #06-04
Singapore 757700

Tel : +65 6219 0700 Fax: +65 6219 2822
Email : deltaintercon@singnet.com.sg
Website : www.deltaintercon.com.sg



DELTA STARLITE 110

Resurfacing Finish for Concrete

TECHNICAL AND APPLICATION DATA

Compressive Strength	7 days: 7 N/mm ² 12 days: 12 N/mm ²
Tensile Bending Strength	7 days: 3 N/mm ² 12 days: 5 N/mm ²
pH	11
Bulk Density	Approx. 1 kg/lit
Fresh Mortar Weight	Approx. 1.4 kg/lit

No. of components	1
Mixing ratio (by weight)	1 : 2 Water : Powder
Pot Life	30mins @ 20°C

PACKAGING

20 kg/pail

STORAGE CONDITIONS AND SHELF LIFE

Delta Starlite 110 has a shelf life of 6 months in original unopened packing, stored in dry enclosed place without exposing to direct sunlight and at temperature between 15°C to 35°C. Protect from frost.

SAFETY

Product contains cement. Do not take internally. May irritate eyes and skin. Ensure adequate ventilation and avoid inhaling vapours. Always use with suitable personal protective equipment.

Delta Intercontinental Pte Ltd
38 Woodlands Industrial Park E1, #06-04
Singapore 757700

Tel : +65 6219 0700 Fax: +65 6219 2822
Email : deltaintercon@singnet.com.sg
Website : www.deltaintercon.com.sg