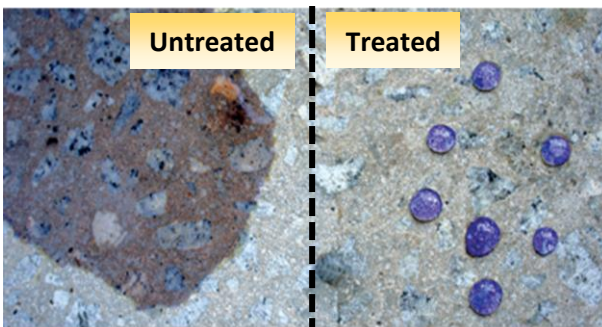




DELTA NANO WATER REPELLENT (MINERAL SURFACE)

Water Repellent Spray For Mineral Surface



DESCRIPTION

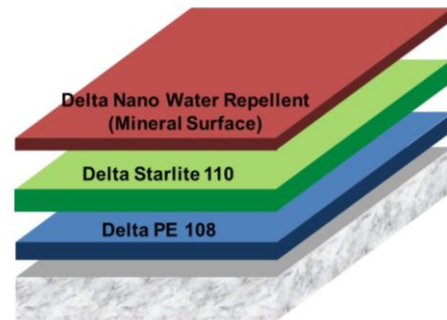
Delta Nano Water Repellent (Mineral Surface) is a transparent penetrating water repellent spray for mineral surface. It is water based, non toxic and contains other proprietary nano particles to enhance its water repellency property. It protects mineral substrate from the damaging effect caused by water ingress, thereby extends the substrate's durability and renders the surface an aesthetically pleasing finish.

BENEFITS

- ❖ Protects mineral substrates from the freeze-thaw damage caused by water ingress.
- ❖ Helps prevent spalling concrete.
- ❖ Excellent water repellency.
- ❖ Non-toxic and UV stable.
- ❖ Breathable and does not affect the appearance of the substrate.

USES

- ❖ For use on porous mineral surfaces e.g. concretes, mortars, grouts, bricks etc
- ❖ As water repellent finishing coat for **CleanCoat** (Delta Water Repellent Coating System)



TECHNICAL AND APPLICATION DATA

Density	1.01 g/L
pH	6 - 8
Flash Point	>100°C
Drying Time	1-2 hours

COLOR

Whitish liquid

FINISHING

Clear

SURFACE PREPARATION

Ensure surfaces are dry and free of all laitance, grease, oil or loose and flaking particles.

Delta Intercontinental Pte Ltd
 38 Woodlands Industrial Park E1, #06-04
 Singapore 757700

Tel : +65 6219 0700 Fax: +65 6219 2822
 Email : deltaintercon@singnet.com.sg
 Website : www.deltaintercon.com.sg



DELTA NANO WATER REPELLENT (MINERAL SURFACE)

Water Repellent Spray For Mineral Surface

APPLICATION

- ❖ Spray onto the substrate until wet @ 0.2-0.5lit/m².
Allow product to soak into the substrate.

Note:

- 1) Consumption rate varies according to substrate porosity.
- 2) Protect from rain for at least 3 hours.

Mixing – Shake before use.

Tools – Applied using low pressure spray.

Recoating time – Interval between coats: When the previous coat is still wet.

PACKAGING

1 lit/bottle

STORAGE CONDITIONS AND SHELF LIFE

Delta Nano Water Repellent (Mineral Surface) has a shelf life of 24 months in original unopened packing, stored in dry enclosed space without exposure to direct sunlight and extreme temperature. Protect from frost.

SAFETY

Do not take internally. May irritate eyes and skin. Ensure adequate ventilation and avoid inhaling vapours. Always use with suitable personal protective equipment.