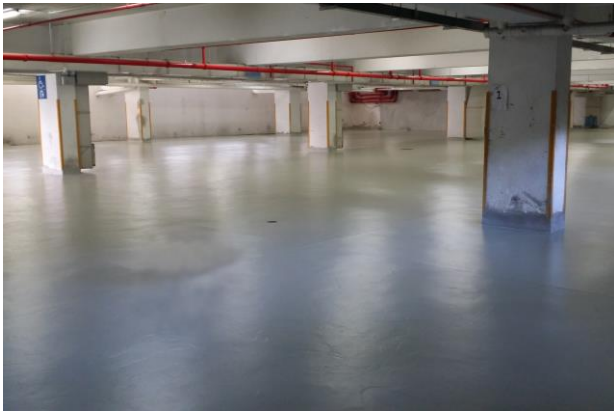




DELTA EC 8

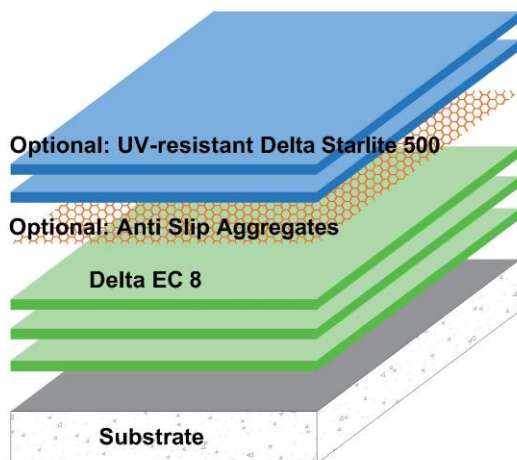
Water-based Epoxy Coating



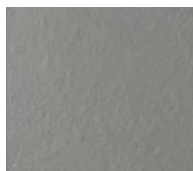
DESCRIPTION

Delta EC 8 is a solvent-free, high-build, water-based epoxy coating.

SYSTEM DESIGN



COLOR



Light grey

Note: Actual product colors might vary slightly from the photo shown.

BENEFITS

- ❖ Compatible with cementitious as well as asphaltic substrates.
- ❖ Solvent-free, makes application in confined places bearable.
- ❖ Breathable.
- ❖ Less sensitive to moisture during application.
- ❖ Excellent adhesion and abrasion resistance.
- ❖ Resistant to wide range of chemicals.
- ❖ **HACCP certified to Singapore Standard** for use in facilities covered by HACCP accreditation

USES

- ❖ For protection of surfaces against dusting, solvent and chemical attack.
- ❖ Ideal for use as floor and wall coatings, especially where solvent-based material is undesirable.
- ❖ Typical applications include food process area, assembly plant, pharmaceutical, warehouses, garages and car parks.

FINISH

Satin

PACKAGING

20 kg set comprises of: Part A – 17 kg
Part B - 3 kg

Delta Intercontinental Pte Ltd
38 Woodlands Industrial Park E1, #06-04
Singapore 757700

Tel : +65 6219 0700 Fax: +65 6219 2822
Email : deltaintercon@singnet.com.sg
Website : www.deltaintercon.com.sg



DELTA EC 8

Water-based Epoxy Coating

SURFACE PREPARATION

Substrates to be coated must be structurally sound, clean and free from any contamination. Use mechanical stone grinding or other mechanical means to remove laitance. All residues must be removed by vacuum cleaning to provide a dry, dust free open textured surface. For other specific application, consult DELTA INTERCONTINENTAL P/L.

APPLICATION

- ❖ Primer coat of Delta EC 8 @ 0.17kg/m²
- ❖ Body coat of Delta EC 8 @ 0.17kg/m².
- ❖ Finishing coat of Delta EC 8 @ 0.17kg/m².

Mixing – Before mixing, stir Part A, then mix Part A and Part B thoroughly for 2 minutes, using a slow speed power mixer (300 – 500 rpm).

Tools – Applied by brush, short nap epoxy roller or airless sprayer.

Recoating time – Interval between coats: 8 hours.

Maximum recoating time: 24 hours.



TECHNICAL AND APPLICATION DATA

Pull-off Strength ASTM D 4541	>1.5 N/mm ² (Concrete failure)
Abrasion Resistance (1000g, 1000 cycles)	0.05g

Recommended dry film thickness	240μ
No. of coats	3
No. of components	2
Mixing ratio	5.7:1 by weight of Part A & Part B
Pot Life	55mins @ 25°C
Cleaner	Water

MAINTENANCE

To maintain the appearance of the floor, all spillage must be removed immediately and clean regularly using rotary scrubber, wash and vacuum in conjunction with suitable detergents and waxes.

STORAGE CONDITIONS AND SHELF LIFE

All components of Delta EC 8 have a shelf life of 12 months in original unopened packing, stored in dry enclosed place without exposing to direct sunlight and at temperature between 10°C to 35°C. Protect from frost.

SAFETY

Always use with suitable personal protective equipment. For more information on safety, refer to the product safety data sheet.

DELTA EC 8

Water-based Epoxy Coating



Chemical Resistance List

Chemical	Result
Acetic Acid (10%)	No effect
Acetic Acid (25%)	No effect
Acetic Acid (40%)	Faint mark (discoloration)
Acetic Acid (99%)	Faint mark (discoloration)
Brine (Saturated sodium chloride)	No effect
Calcium Chloride (50%)	No effect
Calcium Hydroxide (Saturated)	No effect
Citric Acid (20%)	No effect
Citric Acid (60%)	No effect
Detergent (Alkaline)	No effect
Formic Acid (40%)	Severe mark (blistering)
Formic Acid (70%)	Severe mark (peeling, flaky)
Formic Acid (90%)	Severe mark (peeling, flaky)
Formic Acid (99%)	Severe mark (flaky)
Gasoline	No effect
Hydrochloric Acid (10%)	No effect
Hydrochloric Acid (37%)	No effect
2-propanol (99%)	No effect
Jet Fuel	No effect
Kerosene	No effect
Methanol (99%)	No effect
Methylene Chloride (99%)	No effect
Methyl Ethyl Ketone (99%)	No effect

Chemical	Result
Motor Oil	No effect
Nitric Acid (5%)	Faint mark (discoloration)
Nitric Acid (30%)	Faint mark
Nitric Acid (65%)	Severe mark (slight blistering)
Phosphoric Acid (5%)	Faint mark (discoloration)
Phosphoric Acid (40%)	Faint mark (discoloration)
Phosphoric Acid (50%)	Faint mark (discoloration)
Phosphoric Acid (85%)	Faint mark (discoloration)
Potassium Hydroxide (50%)	No effect
Sodium Chloride (Saturated)	No effect
Sodium Hydroxide (20%)	No effect
Sodium Hydroxide (32%)	No effect
Sodium Hydroxide (50%)	No effect
Sodium Hypochlorite (15%)	No effect
Sulfuric Acid (5%)	Faint mark
Sulfuric Acid (30%)	Faint mark
Sulfuric Acid (50%)	Faint mark
Sulfuric Acid (98%)	Severe mark
Toluene (99%)	No effect
Distilled Water	No effect
White Spirit	No effect
Xylene (99%)	No effect